

SecurityLink ET Column Connector

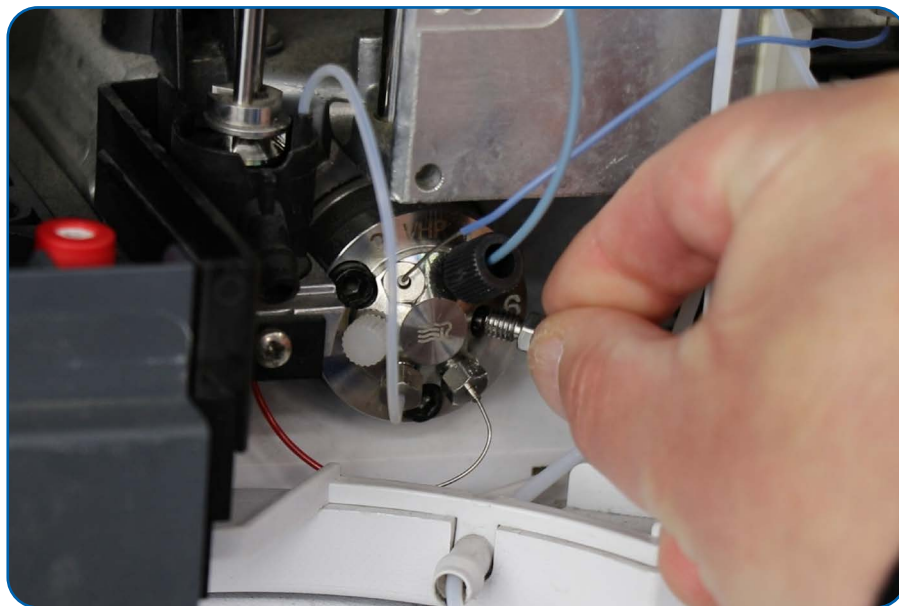
Optimized Compact Connections for
Precise LC and Low Flow Separations

- Small footprint for better compatibility with HPLC/UHPLC systems
- Zero dead-volume connection
- Improved chromatographic results
- Easy and secure installation



SecurityLINK ET LC Column Connector

- Sealing technology allows the fitting to self-adjust to almost any column inlet and instrument port ensuring a zero dead-volume for superior chromatographic results
- Torque-limiting technology, with haptic 'click', prevents system and column port damage
- UHPLC and HPLC compatibility: pressure rated up to 19,000 psi (1,310 bar). See table in page 5
- Smaller design and external tool provides easy installation in tight spaces



Color Labeling for Easy Identification

SecurityLINK ET connectors are color coded to identify the connector's manufactured material -PEEKsil or stainless steel - and its internal diameter (ID), which makes it easier to find them around the lab.

Label Color	Material	Internal dimension (ID)
Red	PEEKsil	All IDs
Green	Stainless Steel	100 μm
Purple	Stainless Steel	125 μm
Blue	Stainless Steel	254 μm



Torque Limiting Tool for Leak-free and Precise Connectivity

SecurityLINK ET LC column connector is designed to easily fit in 'hard-to-reach' places of your system.

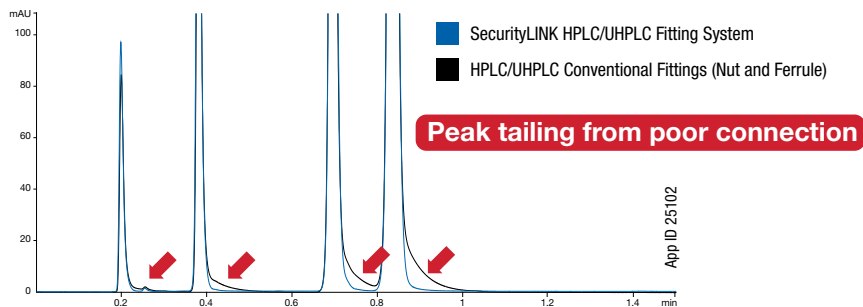
An external patent-pending tightening tool, featuring a sensorial click torque limiting technology, secures the connector to the system providing a high precision connection preventing port damage, peak tailing, leakage, and other performance issues during analysis that could ruin chromatography results.



Eliminate Connection Flaws

Manual installation of nuts and ferrules leads to peak tailing and leakages due to bad cuts, poor fitting, and poor connectivity. It can also result in column damage if overtighten.

SecurityLINK ET is designed to eliminate connectivity flaws and column damage due to faulty installation. It allows zero dead-volume connections every time while preventing carryovers, band broadening, and peak tailing.

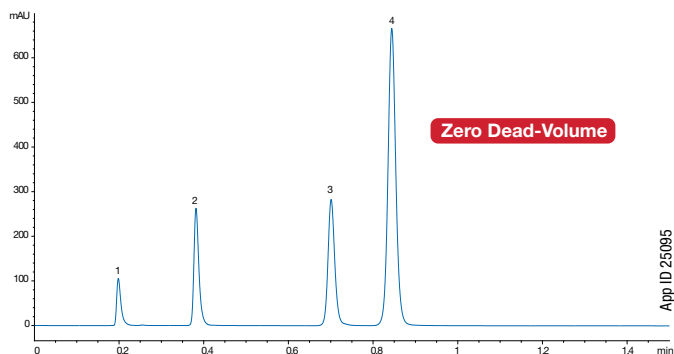


Conditions
Column: Luna™ Omega 1.6 µm C18
Dimensions: 50 x 2.1 mm
Part No.: [00B-4742-AN](#)
SecurityLINK Part No.: [AJ1-1421](#)
Mobile Phase: Water / Acetonitrile (35:65)
Flow Rate: 0.5 mL/min
Injection Volume: 0.2 µL
Temperature: 25 °C
Detection: UV @ 254 nm
Sample: 1. Uracil
2. Acetophenone
3. Toluene
4. Naphthalene

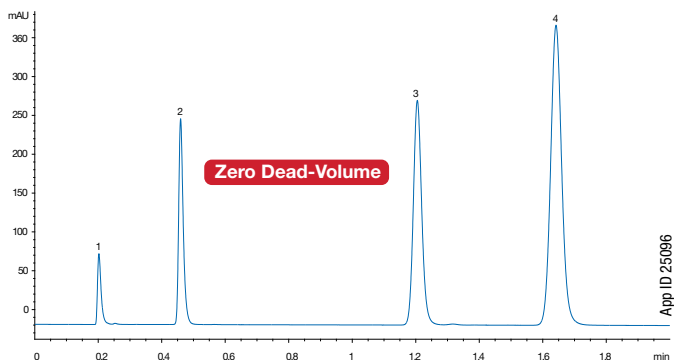
Column Compatibility

SecurityLINK ET is compatible with most LC columns and systems available in the market.

Phenomenex Luna Omega 1.6 µm C18 50 x 2.1 mm

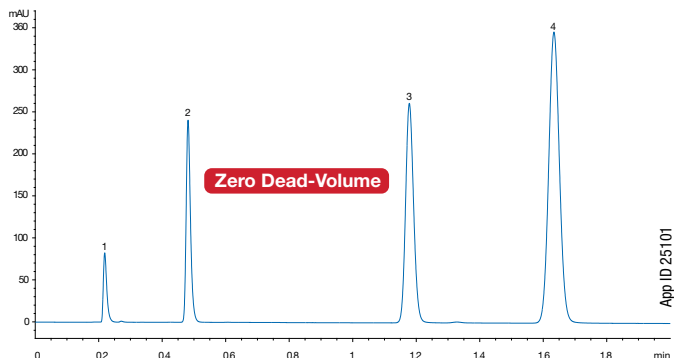


Agilent® ZORBAX® Eclipse Plus 1.8 µm C18 RRHD 50 x 2.1 mm



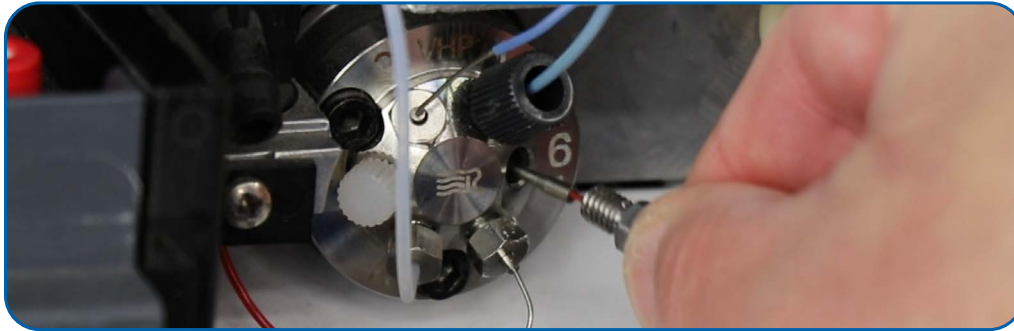
Conditions for all columns:
Column: Luna Omega 1.6 µm C18
ACQUITY BEH 1.7 µm C18
ZORBAX Eclipse Plus 1.8 µm C18 RRHD
Dimensions: 50 x 2.1 mm
SecurityLINK Part No.: [AJ1-1421](#)
Mobile Phase: Water/Acetonitrile (35:65)
Flow Rate: 0.5 mL/min
Injection Volume: 0.2 µL
Temperature: 25 °C
Detection: UV @ 254 µm
Sample: 1. Uracil
2. Acetophenone
3. Toluene
4. Naphthalene

Waters® ACQUITY® UPLC® BEH 1.7 µm C18 50 x 2.1 mm

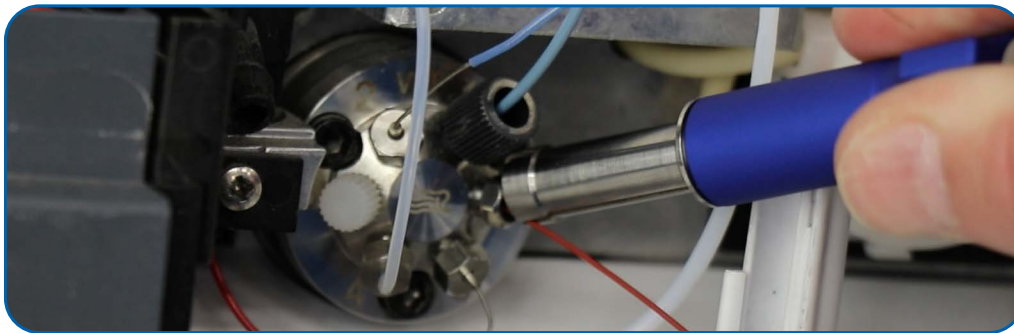


How to Install

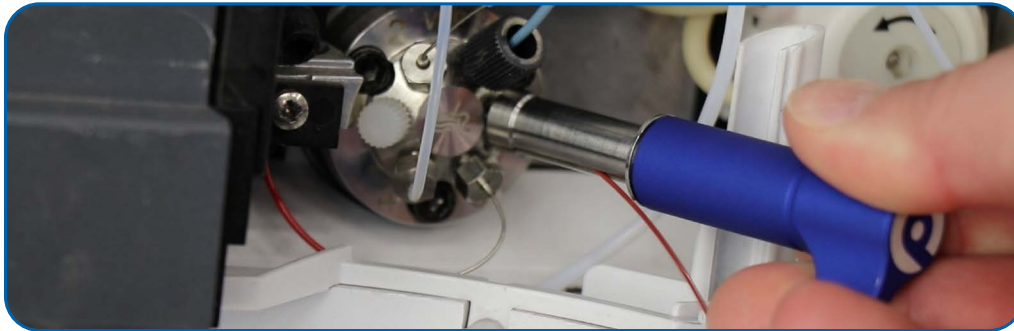
- 1 Insert SecurityLINK ET column connector into the column port or LC System



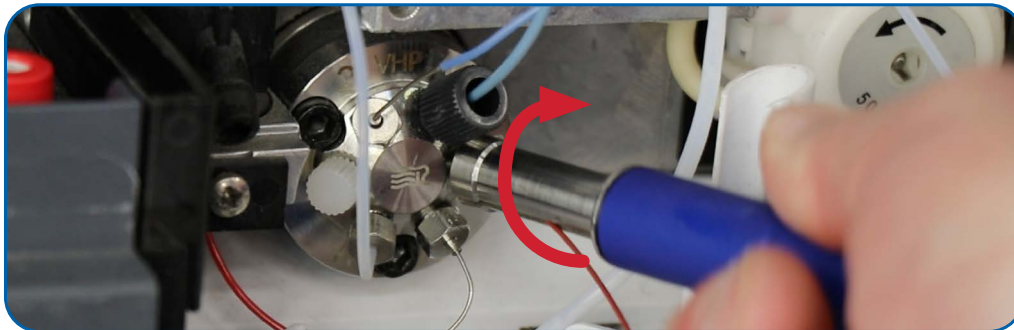
- 2 Use the torque tool to affix the connector to the port. Align the tool slit with the connector's tubing



- 3 Slide the tool toward the connector's fitting



- 4 Turn the tool until you feel a 'click'



Tip

The "CLICK" feedback indicates the SecurityLINK connection is secure. Only one click is needed to ensure a leak free connection!



SecurityLINK ET

Technical Specifications

Tubing Material	PEEKsil	Stainless Steel	
# of uses	100	100	
Fitting compatibility	Tip seal connection: 1/16" with 10-32 threaded fittings		Tip seal connection: 1/16" with 10-32 threaded fittings
ID range	25-75 µm	100-125 µm	100-125 µm 254 µm
Pressure Rating	20,000 psi	19,000 psi	19,000 psi 10,000 psi
Temperature Limit	80 °C		
Biocompatible	Yes		No
Tubing bend radius limit	13 mm (0.5") radius without damage		6.3 mm (0.25") radius without damage
Solvent compatibility	There is a small piece of PEEK at the end of each SecurityLINK ET fittings. Compatible with most organic solvent.		

For specific pH inquiries and product details contact our technical experts via live chat at www.Phenomenex.com/chat

Ordering Information

	Part No.	Description	Specifications
<p>Color coding identifies the connector's material and its internal diameter (ID).</p> 	PEEKsil Tubing		
	AJ2-2224	SecurityLINK ET PEEKsil 50 µm ID	150 mm Length with single 10-32 Fitting
	AJ2-22A4	SecurityLINK ET PEEKsil 50 µm ID	1000 mm Length with single 10-32 Fitting
	AJ2-2411	SecurityLINK ET PEEKsil 100 µm ID	100 mm Length with 10-32 Fittings
	AJ2-2421	SecurityLINK ET PEEKsil 100 µm ID	150 mm Length with 10-32 Fittings
	AJ2-2441	SecurityLINK ET PEEKsil 100 µm ID	250 mm Length with 10-32 Fittings
	AJ2-2461	SecurityLINK ET PEEKsil 100 µm ID	350 mm Length with 10-32 Fittings
	AJ2-2471	SecurityLINK ET PEEKsil 100 µm ID	500 mm Length with 10-32 Fittings
	AJ2-24A1	SecurityLINK ET PEEKsil 100 µm ID	1000 mm Length with 10-32 Fittings
	Stainless Steel Tubing		
	AJ2-1411	SecurityLINK ET SS 100 µm ID	100 mm Length with 10-32 Fittings
	AJ2-1421	SecurityLINK ET SS 100 µm ID	150 mm Length with 10-32 Fittings
	AJ2-1441	SecurityLINK ET SS 100 µm ID	250 mm Length with 10-32 Fittings
	AJ2-1461	SecurityLINK ET SS 100 µm ID	350 mm Length with 10-32 Fittings
	AJ2-1471	SecurityLINK ET SS 100 µm ID	500 mm Length with 10-32 Fittings
	AJ2-1481	SecurityLINK ET SS 100 µm ID	600 mm Length with 10-32 Fittings
	AJ2-14A1	SecurityLINK ET SS 100 µm ID	1000 mm Length with 10-32 Fittings
	AJ2-1521	SecurityLINK ET SS 125 µm ID	150 mm Length with 10-32 Fittings
	AJ2-1541	SecurityLINK ET SS 125 µm ID	250 mm Length with 10-32 Fittings
	AJ2-1561	SecurityLINK ET SS 125 µm ID	350 mm Length with 10-32 Fittings
	AJ2-1571	SecurityLINK ET SS 125 µm ID	500 mm Length with 10-32 Fittings
	AJ2-1581	SecurityLINK ET SS 125 µm ID	600 mm Length with 10-32 Fittings
	AJ2-15A1	SecurityLINK ET SS 125 µm ID	1000 mm Length with 10-32 Fittings
	AJ2-1621	SecurityLINK ET SS 254 µm ID	150 mm Length with 10-32 Fittings
	AJ2-1641	SecurityLINK ET SS 254 µm ID	250 mm Length with 10-32 Fittings
	AJ2-1661	SecurityLINK ET SS 254 µm ID	350 mm Length with 10-32 Fittings
	AJ2-1671	SecurityLINK ET SS 254 µm ID	500 mm Length with 10-32 Fittings
	AJ2-9000	Tightening Tool with holder	

Protection Solutions for Your HPLC/UHPLC System and Columns

SecurityCAP Mobile Phase and Solvent Waste Safety Cap



- **Promotes Health and Worker Safety**
Solvent vapors and gasses are restricted to their containers
- **Protects HPLC / UHPLC Results**
Eliminates dust and other air contaminants from testing results
- **Confidence During Quality and Safety Audits**
Eliminate aluminum foil or Parafilm® covering solvent bottles

SecurityGuard ULTRA Guard Cartridge System



With SecurityGuard ULTRA, you will experience:

- Increased UHPLC column lifetime
- Better column performance
- More reproducible chromatography
- Fewer wasted columns

Find out more about column protection, [click here](#)

Explore our Micro LC Columns



Core-Shell

Kinetex™ Biphenyl
Kinetex C18
Kinetex EVO C18
Kinetex F5
Kinetex XB-C18



Thermally Modified Fully Porous

Luna™ Omega Polar C18
Luna Omega PS C18



Organo-Silica Fully Porous

Gemini™ C18
Jupiter™ C18
Jupiter C4
Jupiter Proteo
Luna C8 (2)

Luna C18 (2)
Luna NH₂
Luna HILIC
Luna Phenyl-Hexyl
Synergi™ Max-RP

Synergi Hydro-RP
Synergi Fusion-RP
Synergi Polar-RP
Kinetex XB-C18

Find out more about Micro LC columns, [click here](#)

SecurityLink ET Column Connector

Optimized Compact Connections for Precise LC and Low Flow Separations

- Small footprint for better compatibility with HPLC/UHPLC systems
- Zero dead-volume connection
- Improved chromatographic results
- Easy and secure installation

Australia

t: +61 (0)2-9428-6444
auinfo@phenomenex.com

Austria

t: +43 (0)1-319-1301
anfrage@phenomenex.com

Belgium

t: +32 (0)2 503 4015 (French)
t: +32 (0)2 511 8666 (Dutch)
beinfo@phenomenex.com

Canada

t: +1 (800) 543-3681
info@phenomenex.com

China

t: +86 400-606-8099
cninfo@phenomenex.com

Czech Republic

t: +420 272 017 077
cz-info@phenomenex.com

Denmark

t: +45 4824 8048
nordicinfo@phenomenex.com

Finland

t: +358 (0)9 4789 0063
nordicinfo@phenomenex.com

France

t: +33 (0)1 30 09 21 10
franceinfo@phenomenex.com

Germany

t: +49 (0)6021-58830-0
anfrage@phenomenex.com

Hong Kong

t: +852 6012 8162
hkinfo@phenomenex.com

India

t: +91 (0)40-3012 2400
indiainfo@phenomenex.com

Ireland

t: +353 (0)1 247 5405
eireinfo@phenomenex.com

Italy

t: +39 051 6327511
italiainfo@phenomenex.com

Luxembourg

t: +31 (0)30-2418700
nlinfo@phenomenex.com

Mexico

t: 01-800-844-5226
tecnicomx@phenomenex.com

The Netherlands

t: +31 (0)30-2418700
nlinfo@phenomenex.com

New Zealand

t: +64 (0)9-4780951
nzinfo@phenomenex.com

Norway

t: +47 810 02 005
nordicinfo@phenomenex.com

Poland

t: +48 22 104 21 72
pl-info@phenomenex.com

Portugal

t: +351 221 450 488
ptinfo@phenomenex.com

Singapore

t: +65 800-852-3944
sginfo@phenomenex.com

Slovakia

t: +420 272 017 077
sk-info@phenomenex.com

Spain

t: +34 91-413-8613
espinfo@phenomenex.com

Sweden

t: +46 (0)8 611 6950
nordicinfo@phenomenex.com

Switzerland

t: +41 (0)61 692 20 20
swissinfo@phenomenex.com

Taiwan

t: +886 (0) 0801-49-1246
twinfo@phenomenex.com

Thailand

t: +66 (0) 2 566 0287
thaiinfo@phenomenex.com

United Kingdom

t: +44 (0)1625-501367
ukinfo@phenomenex.com

USA

t: +1 (310) 212-0555
info@phenomenex.com

☎ All other countries/regions

Corporate Office USA
t: +1 (310) 212-0555
info@phenomenex.com



www.phenomenex.com

Phenomenex products are available worldwide. For the distributor in your country/region, contact Phenomenex USA, International Department at international@phenomenex.com